



Denham House, 17 Park Lodge Avenue, West Drayton,

- Three bedroom apartment within the Park West development
- Principal bedroom with en suite shower room
- Lift access to all floors and allocated parking
- Open plan reception room with adjoining kitchen and dining area
- Two further bedrooms and a separate family bathroom
- Conveniently located for West Drayton station (Elizabeth Line) and local amenities

Guide Price £355,000

Description

Set within Park West , this three bedroom, two bathroom apartment in Denham House offers well proportioned accommodation with lift access to all floors and the benefit of allocated parking.

The apartment is presented in good condition throughout and provides a practical layout suited to both owner occupiers and investors. The accommodation comprises a spacious open plan reception room with a designated dining area and access to a fitted kitchen, creating a sociable living space. The principal bedroom benefits from an en suite shower room, while two further bedrooms are served by a separate family bathroom.

The property further benefits from ample storage, double glazing, and secure entry. Residents have access to maintained communal areas and parking within the development.

Park West is conveniently located for access to West Drayton station, offering connections via the Elizabeth Line, as well as nearby road links including the M4 and M25. Local amenities, green spaces, and shopping facilities are all within easy reach.

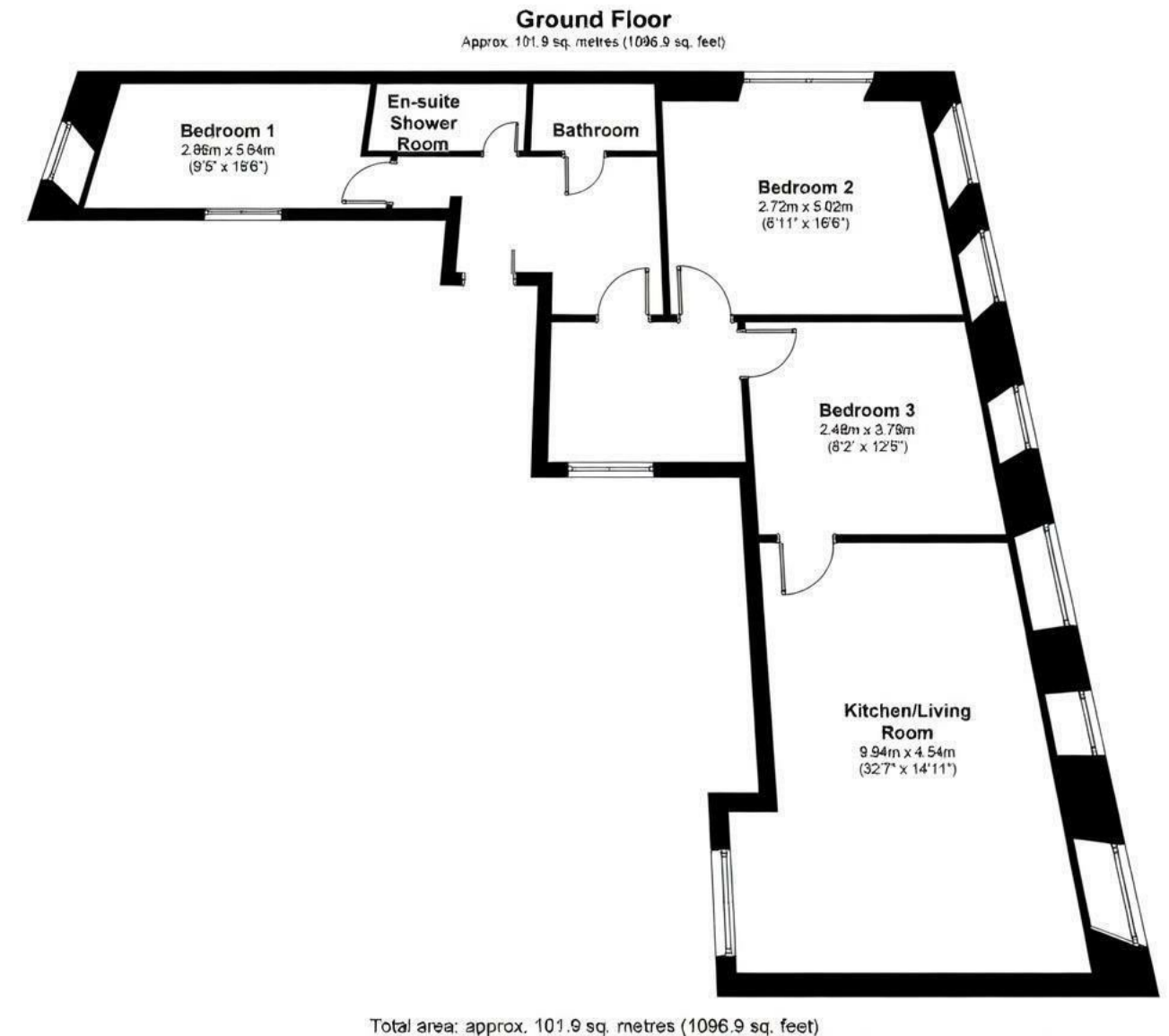
Additional information

Tenure: Freehold

Local Authority: London Borough of Hillingdon

Council Tax: D

EPC Rating: B



IMPORTANT NOTICE

These particulars have been prepared upon information supplied by the Vendor and should be verified by your surveyors and solicitors. We have prepared these sales particulars as a general guide to give a broad description of the property. They are not intended to constitute part of an offer or contract. We have not carried out a structural survey and the services, appliances and specific fittings have not been tested. All photographs, measurements, floor plans and distances referred to are given as a guide only and should not be relied upon for the purchase of carpets or any other fixtures or fittings. Lease details service charge and ground rent (where applicable) are given as a guide only and should be checked and confirmed by your solicitor prior to exchange of contracts